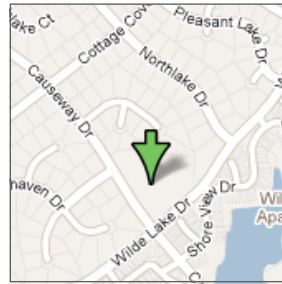




The Colonies Clubhouse is a fabulous setting for a variety of different events from intimate gatherings to larger parties or meetings of various types. For a more open feel, there are large decks overlooking the pool and tennis courts which are a wonderful extension to the indoor space in the warmer seasons. There is a full kitchen with microwave, a large open room with hardwood floors separated by a fireplace. One side is open while the other is a living room type setting. The Clubhouse has an entertainment center which includes a 55in. flat screen HDTV, blue ray player, surround sound, internet and cable HDTV. The tennis courts are lighted for night time play and may be reserved for a fee.



## DIRECTIONS

### FROM THE NORTH

*MERGE FROM I-95 ONTO I-64 VIA EXIT 53-B TOWARD US-250 / RICHMOND.*

*MERGE ONTO US-250 W (WEST BROAD STREET) VIA EXIT 178A TOWARD SHORT PUMP.*

*\*TURN LEFT ONTO LAUDERDALE DRIVE.*

*\*MAKE A RIGHT ONTO CAUSEWAY DRIVE AT THE 4TH TRAFFIC LIGHT*

*\*TURN RIGHT INTO PARKING LOT AFTER CROSSING OVER WILDE LAKE DRIVE.*

### FROM THE SOUTH

*MERGE FROM I-95 N/RICHMOND-PETERSBURG TURNPIKE/I-64 W TOWARD CHARLOTTESVILLE/ WASHINGTON.*

*MERGE ONTO I-64 W VIA EXIT 79 TOWARD I-95 S/POWHITE PKWY/CHARLOTTESVILLE.*

*MERGE ONTO US-250W/WEST BROAD STREET VIA EXIT 178A TOWARD SHORT PUMP.*

*FOLLOW \* DIRECTIONS FRO THE NORTH.*

### FROM THE WEST

*I-64 E TOWARD RICHMOND.*

*MERGE ONTO VA-288S/WWII VETERANS MEMORIAL HWY VIA EXIT 175 TOWARD CHESTERFIELD*

*TAKE THE US-250 EXIT TOWARD BROAD STREET*

*MERGE ONTO US-250 E TOWARD SHORT PUMP.*

*TURN RIGHT ONTO LAUDERDALE DRIVE*

*FOLLOW \* DIRECTIONS FROM THE NORTH.*

# COLONIES

## CLUBHOUSE



❧ 2801 CAUSEWAY DRIVE ❧

WELCOME TO THE COLONIES SWIM AND TENNIS CLUB EVENTS AND MEETINGS VENUE. THE COLONIES CLUBHOUSE OFFERS A WONDERFUL SETTING FOR SOCIAL EVENTS, PARTIES OR GATHERINGS AS WELL AS MEETINGS, CORPORATE EVENTS AND MUCH MORE.

FOR MORE INFORMATION GO TO  
COLONIESHOME.COM





**THE COLONIES SWIM  
AND TENNIS CLUB  
CLUBHOUSE**

2801 Causeway Drive



# CSTC Clubhouse Rental Fees

## Daytime Rental Fee (before 5 PM)

- \*CSTC Members \$20.00 per hour
- \* Non Members \$30.00 per hour

## Monday to Thursday Evening Rental Fees during Peak Season (Memorial Day to Labor Day and Thanksgiving to New Years Day)

(5 PM until 1AM)

- \*CSTC Members \$175.00
- \*Non Member \$300.00

## Monday to Thursday Evening Rental Fees during Non Peak Season

(5PM until 1AM)

- \*CSTC Members \$25/hr with \$100 max.
- \*Non Member \$40/hr with \$175 max

## Year Round Weekend Rental Fees (Friday, Saturday, Sunday)

(5PM until 1AM)

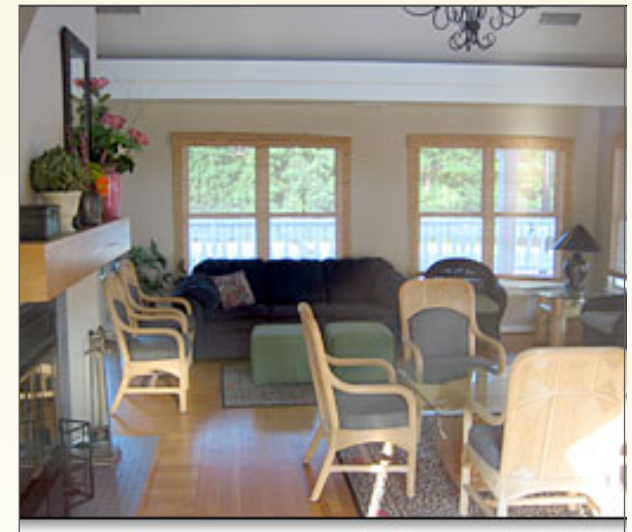
- \*CSTC Members \$175
- \*Non Member \$300

## All Day Rental Fees

- \*CSTC Member \$325
- \*Non Member \$450

**\$150 Security Deposit required with all  
Rentals**

# The Colonies



Clubhouse availability can be seen on [www.colonieshome.com](http://www.colonieshome.com). An up to date calender can be found on our website along with a copy of the CSTC Clubhouse Rental Agreement.

An ABC banquet license is required for all rentals where alcohol is present. To apply for a license, go to [www.abc.state.va.us](http://www.abc.state.va.us)